

Palisades Tunnels 09-038X DBE Outreach Pre-bid Conferences

Contractors pre-qualified to proceed to Phase II of the procurement process for the Final Design and Construction of Palisades Tunnels 09-038X are required to host a pre-bid contractor outreach conference for DBE firms. Those contractors pre-qualified to proceed to Phase II must invite certified DBE firms to their pre-bid contractor outreach conference, including firms listed in the NJUCP, to network with their organization as a method to assist in the identification of potential DBE subcontractors across relevant work categories.

A summary of DBE pre-bid contractor outreach conference details is immediately listed below. Complete registration information is included on the following pages.

1. Schiavone/Shea/Skanska, Joint Venture

Date: October 14, 2009; 8 am – 1:30 pm
Location: Crowne Plaza Meadowlands, Secaucus, NJ
Pre-bid conference contact:
tstiles@spectrumpcc.com or fax (212) 344-4243

2. ARC Constructors - a Joint Venture of S.A. Healy/CCA Civil/Halmar International LLC

Date: October 23, 2009; 8 am – 12:30 pm
Location: The Westin Jersey City Newport, Jersey City, NJ
Pre-bid conference contact:
dbeoutreach@aol.com or call (845) 735-3511

3. Barnard of New Jersey and Judlau Contracting Inc., Joint Venture

Date: October 26, 2009; 8 am – 1:30 pm
Location: Newark Liberty International Airport Marriott, Newark, NJ
Pre-bid conference contact:
www.judlau.com/dbe

4. OHL/Tully, Joint Venture

Date: October 29, 2009; 8:30 am – 2:30 pm
Location: Crowne Plaza Meadowlands, Secaucus, NJ
Pre-bid conference contact:
TGallicchio@tullyconstruction.com

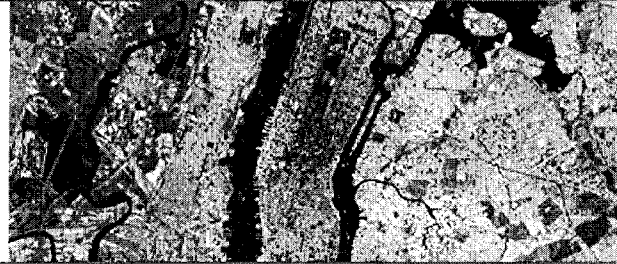


SKANSKA

**Schiavone Shea Skanska, JV
DBE OUTREACH PRE-BID CONFERENCE**

NJ TRANSIT- Mass Transit Tunnel (MTT) Project
Final Design And Construction of The Palisades Tunnels IFB No. 09-038x

Wednesday, October 14, 2009
8:00 a.m. – 1:30 p.m.
CROWNE PLAZA HOTEL
Secaucus-Meadowlands
2 Harmon Plaza, Secaucus, NJ 07094



About the Palisades Tunnel Project... The Palisades Tunnels will be the second of three (3) Design-Build Contracts for the Mass Transit Tunnel Project. The Palisades Tunnels will extend from the East face of the Tonnelle Avenue (Routes 1 and 9) Underpass to the Hoboken access shaft. It includes an open cut to a portal structure at the West face of the Western Slope (Palisades) that turns into two (2) TBM Bored tunnels that run through the Palisades hard rock to the Hoboken access shaft. The twin tunnels will be approximately 5,200 feet long, and will have a finished inside diameter of approximately 24 feet, 6 inches.

Conference Consultant: **SPECTRUM**
Personal Communications Corp.

If you plan to attend, please RSVP by Noon on Tuesday, October 13, 2009 via
email: fstiles@spectrumcoc.com, **fax:** (212) 344-4243 or **mail:** Schiavone Shea Skanska, JV
c/o Spectrum Personal Communications Corp. 40 Exchange Place, Suite 250, New York, NY 10005

Registration Form

Company Name: _____

Contact Person: _____

Address: _____

Telephone: _____ Fax: _____ Email: _____

Trade: _____

Specialty Areas: 1 _____ 2 _____
3 _____ 4 _____

My Company is a certified (check if applicable): DBE

(Please Complete in its Entirety)

