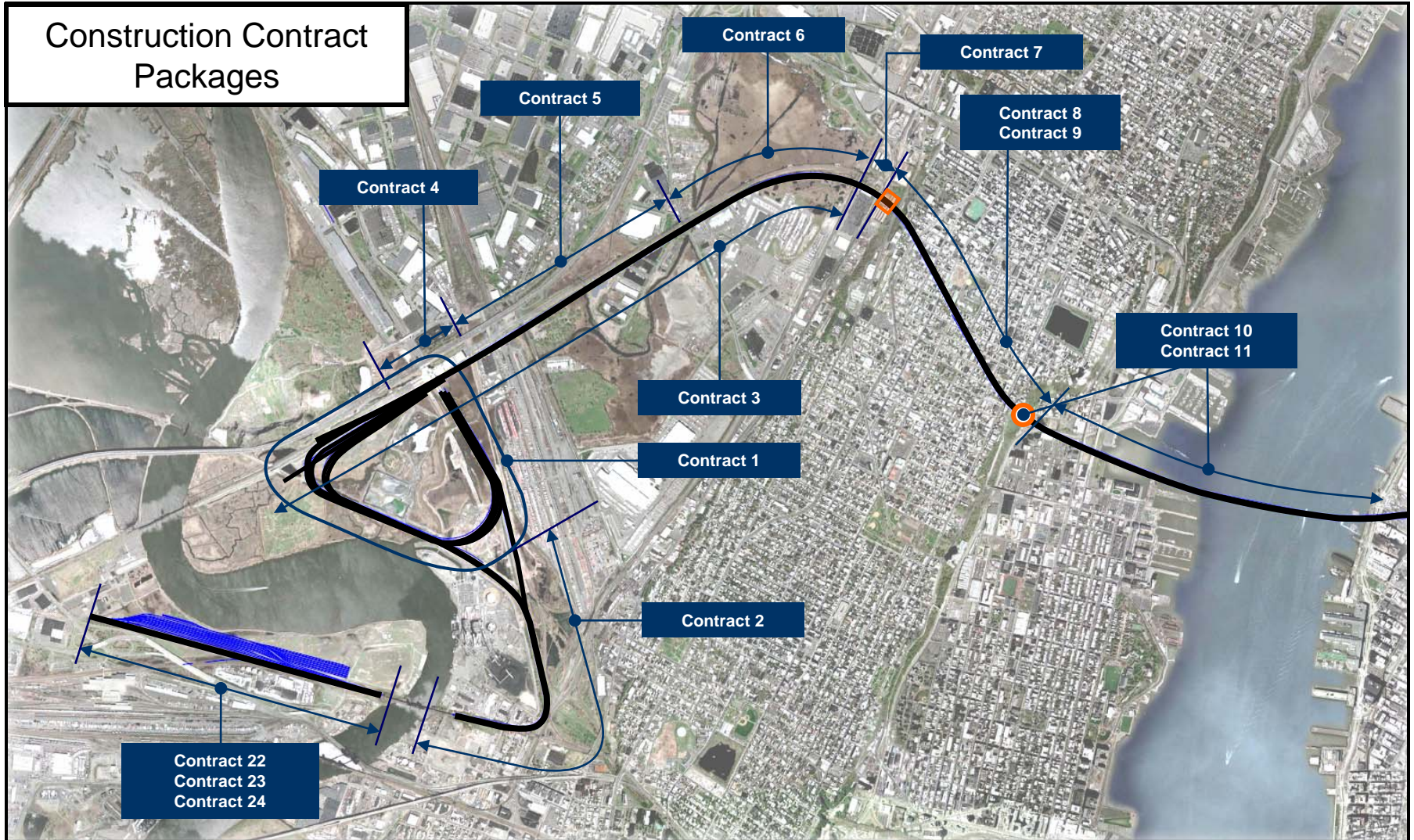


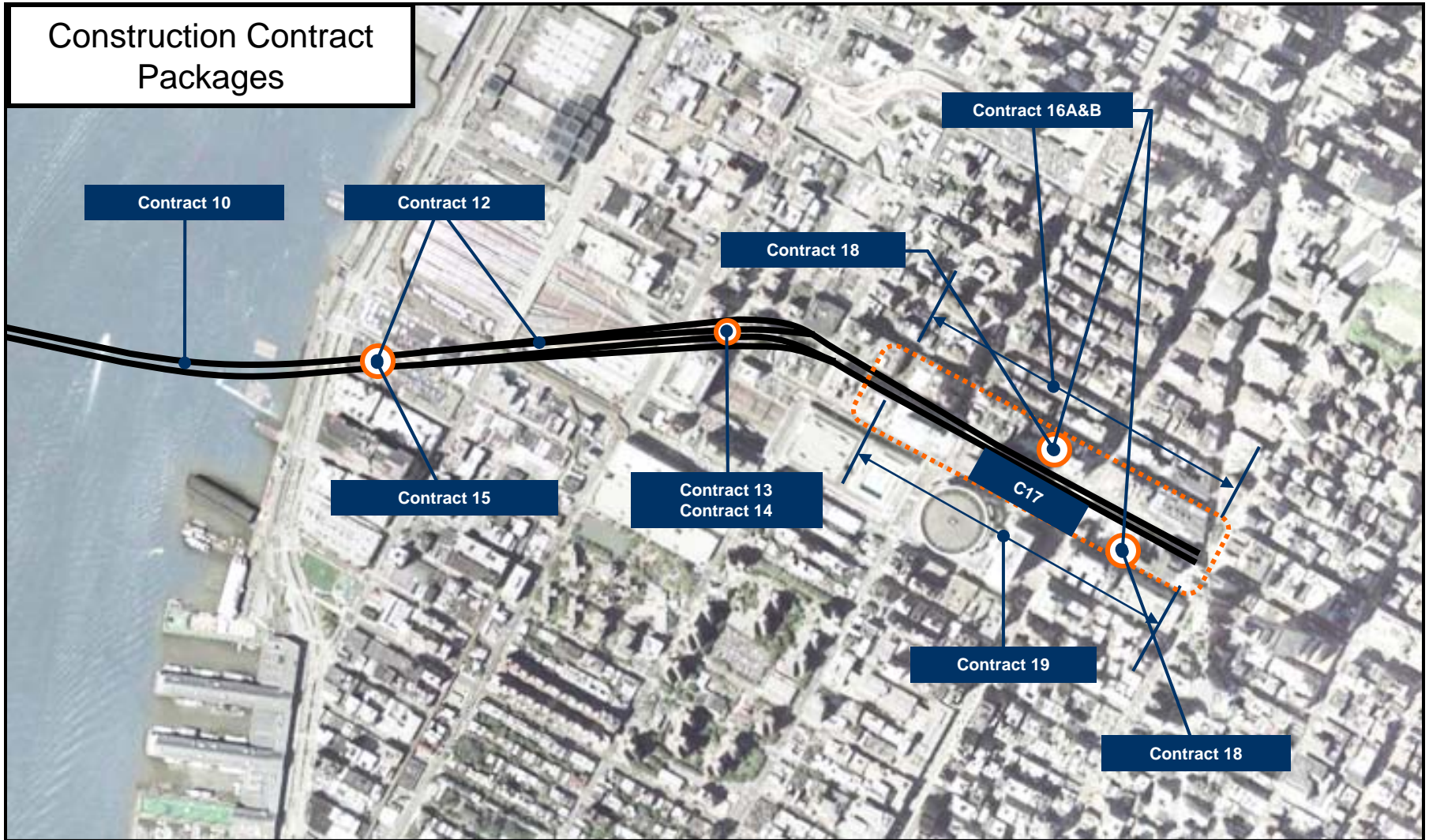
Construction Contract Packages



Contract 1 Loop Track Mainline Connection and FRL Station Connection
 Contract 2 West End Wye Track
 Contract 3 Amtrak Transmission Tower Relocations
 Contract 4 FRL Station Modification & Viaduct up to West of Croxton Yard Bridge
 Contract 5 Croxton Yard Bridge to Secaucus Rd.
 Contract 6 Secaucus Road to Vicinity of Tonnelle Ave.
 Contract 7 Tonnelle Ave. Underpass

Contract 8 Palisades Tunnels
 Contract 9 Palisades Tunnels Internal Concrete
 Contract 10 Hudson River Tunnel
 Contract 11 Hoboken Fan Plant
 Contract 22 Kearny Yard Earthwork Management
 Contract 23 Kearny Yard Civil Work
 Contract 24 Kearny Yard Buildings

Construction Contract Packages



Contract 12	Manhattan Tunnels
Contract 13	Dyer Ave. Shaft Excavation / Interlocking Cavern Excavation & Concrete Lining
Contract 14	Dyer Ave. Fan Plant
Contract 15	Twelfth Ave. Fan Plant, Tunnel Internal Concrete
16A & B	33rd & 35th Sts. Shafts and NYPSE Cavern East and West
Contract 17	NYPSE Station Finishes

Contract 18	Fan Plant Structure at 33rd & 35th Sts.
Contract 19	Station Entrances
Contract 20	Trackwork – At-grade Ballasted Track, Special Track Work and DF Track
Contract 21	Project Wide RR Systems
Contract 25	Furnish and Install all Fans, Fan Controllers, Fan Plant Substations and other Equipment



THE Tunnel Project - Contract Package Construction Cost Estimate Ranges
March 2009 - Contract Packaging

Description / Packages	Contract No.	Procurement Start	Contract Value
Tonnelle Ave. Underpass: (1) new bridge structure for Tonnelle Ave.; (2) building demolition; (3) site restoration; (4) building alteration; (5) utility construction.	C7	2009	< \$50m
Manhattan Tunnels Design / Build Contract: (1) construction of 160 Ft. diameter shaft approximately 160 Ft. deep using slurry wall construction; (2) 19,000 Ft. of bored tunnels through hard rock (4 tunnels); (3) 5 cross passages; (4) cavern construction of Warrington Interlocking; (5) utility and sitework.	C12	2009	< \$500m
Palisades Tunnel Design / Build Contract: (1) open cut construction from Tonnelle Ave. Bridge to Palisades Portal. (2) 10,400 Ft. of hard rock bored tunnels (2 tunnels) with the option for cast in place or segmental liner; (3) waterproofing; (4) 6 cross passages in rock.	C8	2009	< \$250m
Hudson River Tunnels Design / Build Contract: (1) Construction of 120 Ft. diameter shaft, approximately 100 Ft. deep using slurry wall construction; (2) 14,800 Ft. of tunnels mining through soft ground and rock (2 tunnels); (3) 9 cross passages; (4) segmental tunnel liners; (5) access roads; (6) underpinning Willow Ave. Bridge.	C10	2009	< \$500m
Kearny Yard Earthwork Management: This contract includes: (1) site preparation; (2) construction of 700 Ft. of retaining walls; (3) placement of 2 million CY of fill material; (4) construction of site access roads and internal construction roads.	C22	2010	< \$100m
Amtrak Transmission Line Tower Relocations: Relocation of 3 138kV transmission towers, including deep foundations and monopole structures.	C3	2010	< \$50m
Dyer Ave. Shaft and Cavern: (1) excavation and support of 70 Ft. by 100 Ft. surface area shaft, approximately 120 Ft. deep; (2) staged enlargement of 4 previously bored tunnels to form cavern; (3) construction of adits to ADA and access shaft including concrete work and waterproofing; (4) placement of final concrete liner for the interlocking cavern, including invert slab; (5) construction of three level cavern and multi-level fan plant substructure; (6) concrete tunnel benches and invert drainage system; (7) Excavation of garage shaft.	C13	2010	< \$500m
C16A - 35th St. Shaft Excavation and East End Cavern Excavation and Concrete: (1) demolition of existing building; (2) excavation and temporary support for shaft construction; (3) enlargement of 4 previously bored tunnels using drill and blast construction; (4) construction of adits to ADA and access shafts including concrete work and waterproofing; (5) placement of final concrete liner for cavern including invert slab.	C16A	2010	< \$500m
C16 B: 33rd Shaft Excavation and West End Cavern Excavation and Concrete: (1) demolition of existing building; (2) excavation and temporary support for shaft construction; (3) enlargement of 4 previously bored tunnels using drill and blast construction; (4) construction of adits to ADA and access shafts including concrete work and waterproofing; (5) placement of final concrete liner for cavern including invert slab.	C16B	2010	< \$500m
Loop Track Mainline Connection & FRL Station Connection: (1) 5200 Ft. track viaduct and retained fill; (2) 6000 Ft. embankment; (3) underpass with retaining wall to NEC; (4) railroad bridge over Penhorn Creek; (5) access bridge over Lower Penhorn Creek; (6) excavation and site grading and capping within landfill.	C1	2011	< \$500m
NY Penn Station Expansion - Station Architectural and Station Finishes: (1) construction of upper and lower level platforms (1680 Ft. length each); (2) construction of finishes for upper level, mezzanine, lower level and connections to existing Penn Station NY with adjoining subway connections; (3) MEP fit out construction; (4) vertical transportation, including stairs, escalators and elevators.	C17	2011	< \$500m
Station Entrances: Construction of 5 station entrance facilities in New York at 6th, 7th and 8th Ave. along 34th Street and 3 ADA shafts: (1) selective demolition and support of existing structures; (2) drill and blast construction for access tunnels to NYPSE cavern; (3) permanent concrete lining in tunnel adits and shafts; (4) street and site restoration; (5) utility relocation.	C19	2011	< \$500m
Frank R. Lautenberg Station To West Of Croxton Yard Bridge Includes FRL Station Modifications & Viaduct Through Station: (1) Station building modifications; (2) new center island platform; (3) 1250 Ft. of viaduct structure through station; (4) site work modifications and access road.	C4	2011	< \$500m
Croxton Yard Bridge To Secaucus Road Includes Construction Of Croxton Yard Bridge, Viaduct & Embankment: (1) foundation construction; (2) 800 Ft. of bridge viaduct; (3) 1000 Ft. of embankment; (4) 2800 Ft. of retained fill; (5) construct of site access roads.	C5	2011	< \$100m
Secaucus Road To West Side Of Tonnelle Ave.: (1) 2000 Ft. bridge viaduct structure; (2) 2300 Ft. embankment; (3) bridge over Conrail/NYS&W; (4) Wick drain installations; (5) surcharge placement and removal; (6) access roadways.	C6	2011	< \$100m
Twelfth Ave. Fan Plant Internal Concrete Structure and Fit Out: (1) construction of cast in place concrete tunnel, invert slab, with underdrain; (2) Cast in place duct bank bench wall; (3) construct below grade fan plant structure; (4) building superstructure and envelope; (5) MEP fit out construction.	C15	2011	< \$250m
West End Wye Track: (1) 700 Ft. retained fill; (2) 700 Ft. bridge structures; (3) 3400 Ft. embankment; (4) 2 rail bridge structures (James Ave. and West Side Ave.)	C2	2012	< \$100m
Trackwork: Construction of 9 miles of trackwork along the tunnel alignment in New York and New Jersey, including Kearny Yard. Elements of the work include: (1) 5.6 miles of ballasted track; (2) 3.4 miles of direct fixation track; (3) special trackwork and ancillary devices.	C20	2012	< \$250m
RR Systems: Installation, testing and commissioning of all railroad systems, including: (1) traction power; (2) catenary; (3) substations; (4) train signal control; (5) communications; (6) CCTV; (7) passenger communications; (8) tunnel lighting; (9) ventilation control.	C21	2012	< \$500m
Kearny Yard Civil Work: (1) construction of Koppers Coke Bridge; (2) removal and disposal of surcharge materials; (3) construction of rail structure facilities, including inspection pit, sanding facility; (4) 22,000 Ft. of paved site access roads; (5) construction of site utilities.	C23	2012	< \$250m
Tunnel MEP Finishes and Tunnel Fans at Fan Plant Locations: Work in this contract includes: (1) MEP finishes; (2) five tunnel fans at Fan Plant facilities; (3) fan controllers; (4) electrical substations.	C25	2012	< \$100m
Palisades Tunnels Internal Concrete and Substation Control Facility: (1) cast in place concrete tunnel, invert slab with underdrain; (2) cast in place concrete duct bank benchwall; (3) concrete vent plenum wall; (4) site grading and utilities, construction of traction power substation control buildings.	C9	2012	< \$50m
Hoboken Fan Plant, Internal Concrete, Structure and Facility Fit Out: (1) cast in place concrete tunnel, invert slab with underdrain; (2) cast in place concrete duct bank benchwall; (3) concrete vent plenum wall; (4) site grading and utilities; (5) construction of below grade and above fan plant structure; (6) building envelope and fit out construction; (7) MEP fit out construction.	C11	2013	< \$250m
Dyer Ave. Fan Plant Structure & Fit Out: (1) construction of facility superstructure including internal configurations of multiple levels; (2) 6 story building envelope (2 levels belowgrade) with steel and masonry construction; (3) MEP fit out construction.	C14	2013	< \$50m
33rd and 35th Street Fan Plant Structure and Fit out: (1) construction of facility superstructure, including internal configurations of multiple levels; (2) five-story building envelope (2 levels below grade) with steel and masonry construction; (3) MEP fit out construction.	C18	2013	< \$100m
Kearny Yard Buildings: Work in this contract includes: (1) construction of employee facility; (2) trainwasher facility; (3) outdoor lighting; (4) catenary structures.	C24	2013	< \$100m